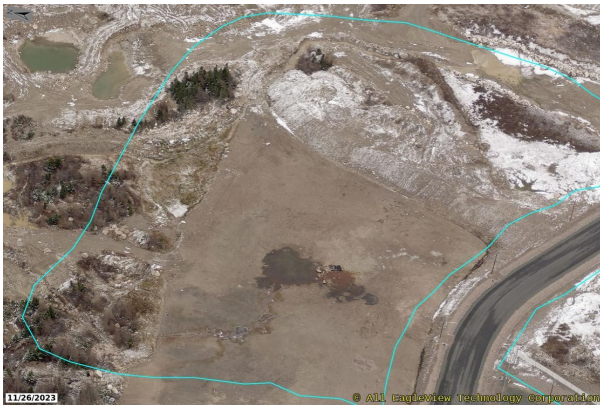


Ready to get introduced to your ideal Atlantic Canada Listed Site? Here it is!

4

Horizon Drive Lot 7, St. John's, NL



SITE SUMMARY

Address : Horizon Drive Lot 7

City : St. John's

Province : Newfoundland & Labrador

Site Status : Listed Site

Site Category : Development Land – Mixed-Use

Lot Area - Continuous Acres: 7

Building Size (sq ft):

For sale or lease: Sale

Terms of sale or lease: 1,500,000

Zoning:

TRANSPORTATION

HIGHWAY

Nearest north/south highway: Team Gushue Highway

Distance from north/south highway: 4 Kms

Nearest east/west highway: Team Gushue Highway

Distance from east/west highway : 4 Kms

AIRPORT

Closest airport: St. John's International Airport (YYT)

Closest airport location: St. John's, NL

Closest airport distance: 9 Kms

RAIL

Closest rail line operator:

Distance from closest rail line:

PORT

Closest port: Port of St. John's

Closest port distance: 7 Kms

UTILITY SERVICE

Electricity Service Provider:

Three-phase power serviced: Yes

Internet service availability: Yes

Site Water Service: Municipal Piped Water Service

Site Waste Water Service: Municipal Wastewater Service

Natural Gas Service to Lot Line: Yes

CONTACT INFORMATION (EDO)