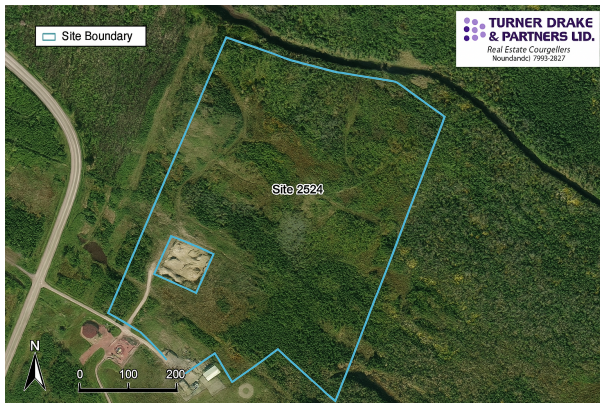


Ready to get introduced to your ideal
Atlantic Canada Listed Site? Here it
is!

4

131 Heavy Water Road, Point Tupper





SITE SUMMARY

Address : 131 Heavy Water Road, Point Tupper

City : Point Tupper

Province : Nova Scotia

Site Status : Listed Site

Site Category : Development Land - Industrial

Site Category : Vacant Buildings - Industrial

Lot Area - Continuous Acres: 257

Building Size (sq ft):

For sale or lease: Sale

Terms of sale or lease: 6,700,000

Zoning:

TRANSPORTATION

HIGHWAY

Nearest north/south highway: Trans-Canada Highway 104

Distance from north/south highway: 5 kms

Nearest east/west highway: Trans-Canada Highway 104

Distance from east/west highway : 5 kms

AIRPORT

Closest airport: Allan J. MacEachen Regional Airport (Port Hawkesbury Airport – YPS/CYPD)

Closest airport location: Port Hawkesbury, NS

Closest airport distance: 10 kms

RAIL

Closest rail line operator: Cape Breton and Central Nova Scotia Railway (CBNS)

Distance from closest rail line: 1.3 kms

PORT

Closest port: Port of Point Tupper

Closest port distance: 1 kms

UTILITY SERVICE

Electricity Service Provider: NS Power

Three-phase power serviced: Yes

Internet service availability: Yes

Site Water Service: Municipal Piped Water Service

Site Waste Water Service: Municipal Wastewater Service

Natural Gas Service to Lot Line: No

CONTACT INFORMATION (EDO)